



+31 (0) 88 996 4000



oceansales@neelevat.com

neelevat

THE LATEST INFORMATION REGARDING

Ocean Freight Rates 2025

JUNE 2025

MONTHLY MARKET UPDATE

LOGISTICS IN TRUSTED HANDS

Westbound Ocean Freight Tariff Bulletin

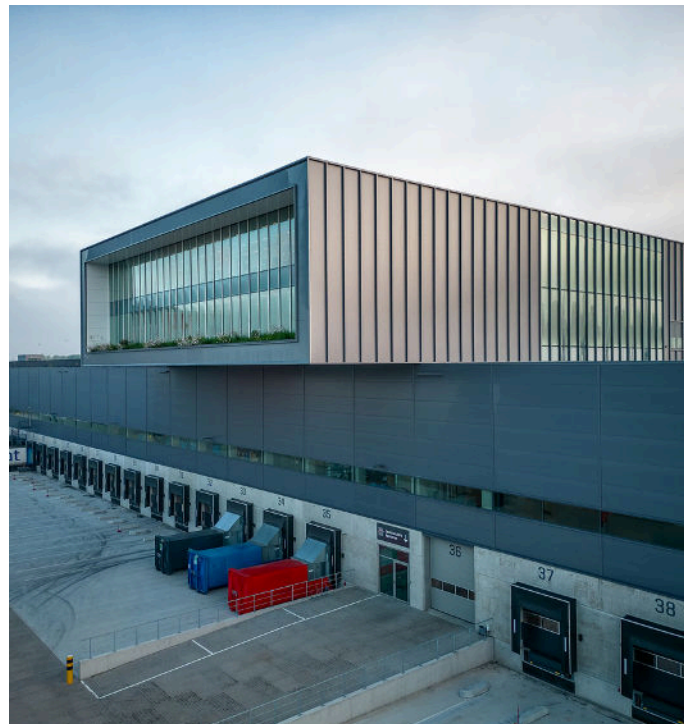
Welcome to Neele-Vat's monthly Westbound Ocean Freight Rates brochure. First and foremost, we would like to thank you for the continued trust you place in our team. Every shipment is part of a larger partnership we are proud to support, and your confidence in us is something we value deeply.

In this edition we present the latest pricing and market dynamics for westbound container flows, emphasizing dependable transit times and transparent all-in pricing. As a family-owned company since 1975, we stand by our promise Logistics in trusted hands—built on entrepreneurship, openness, loyalty, and a focus on results.

The global ocean-freight market is constantly evolving. Capacity shifts, environmental regulations, and geopolitical developments all influence daily rates and space availability. To help you steer through this dynamic landscape, we have outlined proactive strategies—focused on timely updates, flexible solutions, and meticulous planning—so your cargo is managed efficiently, regardless of market fluctuations.

Our local experts at both origin and destination ports monitor the market 24/7, enabling timely decisions and flawless execution of your supply chain. Whether it's optimizing routes, ensuring on-time deliveries, or designing personalized logistics strategies to meet your business goals, we are here to help.

Have questions or need a tailor-made proposal? Your dedicated contact—together with our worldwide network—is always ready to assist.



+31 (0) 88 996 4000

oceansales@neelevat.com

[seattleweg 13, 3195 ND Rotterdam](#)

China	Direct / via	LCL w/m	20ft	40ft	40ft HC	40'NOR	
Dalian	Direct	USD 55	1.950	3.150	3.150		per container
Hong Kong	Yantian	USD 55	1.950	3.150	3.150		per container
Ningbo	Direct	USD 55	1.950	3.150	3.150	2.650	per container
Qingdao	Direct	USD 55	1.950	3.150	3.150	2.650	per container
Shanghai	Direct	USD 55	1.950	3.150	3.150	2.650	per container
Shanghai DG / IMO	Direct	USD 79	-	-	-		
Taichang	Ningbo	USD N/A	2.050	3.400	3.400		per container
Wuhan	Shanghai	USD N/A	2.100	3.400	3.400		per container
Lianyungang	Qingdao	USD N/A	2.100	3.500	3.500		per container
Nanjing	Ningbo	USD 89	2.250	3.400	3.400		per container
Nantong	Shanghai	USD 88	2.250	3.400	3.400		per container
Shenzhen / Yantian	Direct	USD 55	1.950	3.150	3.150	2.650	per container
Shenzhen / Guanzgou DG / IMO	Direct	USD 150	-	-	-		
Shantou	Yantian	USD 77	2.350	3.450	3.450		per container
Beijiao	Yantian	USD N/A	2.350	3.450	3.450		per container
Foshan	Yantian	USD 73	2.350	3.450	3.450		per container
Guangzhou	Yantian	USD 68	2.350	3.450	3.450		per container
Jiangmen	Yantian	USD 68	2.350	3.450	3.450		per container
Huangpu	Yantian	USD N/A	2.350	3.450	3.450		per container
Jiujiang	Yantian	USD N/A	2.350	3.450	3.450		per container
Nansha	Yantian	USD N/A	1.950	3.150	3.150	2.650	per container
Zhongshan	Yantian	USD 70	2.450	3.450	3.450		per container
Zhuhai	Yantian	USD 70	2.450	3.450	3.450		per container
Xiamen	Direct	USD 55	1.950	3.150	3.150	2.650	per container
Yangzhou	Ningbo	USD 73	2.250	3.300	3.300		per container
Fuzhou	Xiamen	USD 60	2.300	3.350	3.350		per container
Xingang (Tianjin)	Direct	USD 55	1.950	3.150	3.150		per container
Thailand							
Bangkok	Singapore	USD 58	2.500	3.450	3.450		per container
Lat Krabang	Singapore	USD N/A	2.500	3.450	3.450		per container
Laem Chabang	Singapore	USD N/A	2.400	3.300	3.300		per container
Songkhla	Singapore	USD N/A	2.650	3.600	3.600		per container
Korea							
Busan	Direct	USD 65	1.950	3.150	3.150	2.650	per container
Gwangyang		USD N/A	2.250	3.450	3.450		per container
Vietnam							
Haiphong	Singapore	USD 63	2.050	3.350	3.350		per container
Ho Chi Minh / Cai mep	Singapore	USD 56	1.950	3.150	3.150	2.650	per container
Da Nang	Ho Chi Minh	USD 91	2.150	3.550	3.550		per container
Qui Nhon	Singapore	USD N/A	2.550	3.550	3.550		per container
Taiwan							
Kaohsiung	Direct	USD 56	2.100	3.250	3.250	2.650	per container
Keelung	Kaohsiung	USD 56	2.250	3.350	3.350		per container
Taichung	Kaohsiung	USD 56	2.250	3.350	3.350		per container
Taipei (Taoyuan)	Kaohsiung	USD 56	2.250	3.350	3.350		per container
Japan							
Kobe	Direct	USD 88	2.100	3.500	3.500		per container
Osaka	Direct	USD 88	2.100	3.500	3.500		per container
Nagoya	Direct	USD 88	2.100	3.500	3.500		per container
Tokyo	Direct	USD 88	2.100	3.500	3.500		per container
Yokohama	Direct	USD 88	2.100	3.500	3.500		per container
Hakata	Direct	USD 93	2.100	3.500	3.500		per container
Philippines							
Cebu	Kaoshiung	USD 98	2.050	3.300	3.300		per container
Manila	Singapore	USD 67	2.050	3.250	3.250		per container
General Santos	Singapore	USD N/A	2.550	3.850	3.850		per container

Malaysia

Penang	Singapore	USD	67	2.050	3.300	3.300	per container
Port Kelang	Singapore	USD	67	2.050	3.250	3.250	per container

Indonesia

Surabaya	Singapore	USD	69	2.050	3.300	3.300	per container
Jakarta	Singapore	USD	66	2.050	3.300	3.300	per container
Semarang	Singapore	USD	84	2.050	3.300	3.300	per container
Belawan (Medan)	Singapore	USD	80	2.050	3.300	3.300	per container

Singapore

Singapore	Direct	USD	57	2.050	3.300	3.300	2.650	per container
-----------	--------	-----	----	-------	-------	-------	-------	---------------

Cambodia

Sihanoukville	Singapore	USD	93	2.250	3.650	3.650	per container
Phnom penh	Singapore	USD	79	2.350	3.750	3.750	per container

Myanmar

Yangon	Singapore	USD	105	2.250	3.550	3.550	per container
--------	-----------	-----	-----	-------	-------	-------	---------------

Bangladesh

Chittagong ***	Colombo	USD	82	1.950	2.450	2.450	per container
----------------	---------	-----	----	-------	-------	-------	---------------

Sri Lanka

Colombo	Direct	USD	58	1.800	3.100	3.100	per container
---------	--------	-----	----	-------	-------	-------	---------------

Pakistan

Karachi port	Direct	USD	69	1.900	2.000	2.000	per container
Port Qasim	Direct	USD	69	1.900	2.000	2.000	per container

India

Mundra	Direct	USD	N/A	1.250	1.400	1.400	per container
Chennai	Direct	USD	53	1.600	1.800	1.800	per container
Nhava Sheva	Direct	USD	38	1.350	1.400	1.400	per container
Tuticorin	Colombo	USD	49	1.650	1.850	1.850	per container

Surcharges		LCL w/m	20ft	40ft	40ft HC	40 NOR	
Peak Season Surcharge	USD	incl	incl	incl	incl		per container
ETS surcharge Ex Far East	USD	incl	60	120	120		per container
ETS surcharge Ex India / Pakistan / Sri lanka	USD	incl	65	130	130		per container

** for containers shipped via our network application date of carrier (ie shipped on board date) will be applicable for rate calculation purposes only. For shipments originating from indirect load ports ⇒ The first pre-carriage vessel / feeder / barge ETD, as defined above, will be used (only shipments originating from Southern PRC ports, trigger date is the first pre-carriage vessel / feeder / barge ATD will be used).

*** subject to local cost Bangladesh

Heavy weight surcharge may be applicable for 20ft container over 16000 kgs cargo weight

UK Port = London gateway, Felixstowe, Southampton, surcharge USD 125,00 per TEU

Subject to IMD / DG fee / PSS as per lay out carrier

Our general terms and conditions apply to all our services

High volume Surcharge LCL

Please note because of disrupted sailing schedules, shortage of containers, and dramatically increased carrier pricing, Neelevat is receiving bookings of larger than average size. To maintain our schedule integrity, we will implement a High-Volume Surcharge from China/Asia. The High-Volume Surcharge (HVS) is structured as follows and will be implemented with immediate effect on all new bookings and to all Tariffs.

Volume between 20-30M3 add-on USD 20 w/m

Volume between 30-40M3 add-on USD 30 w/m

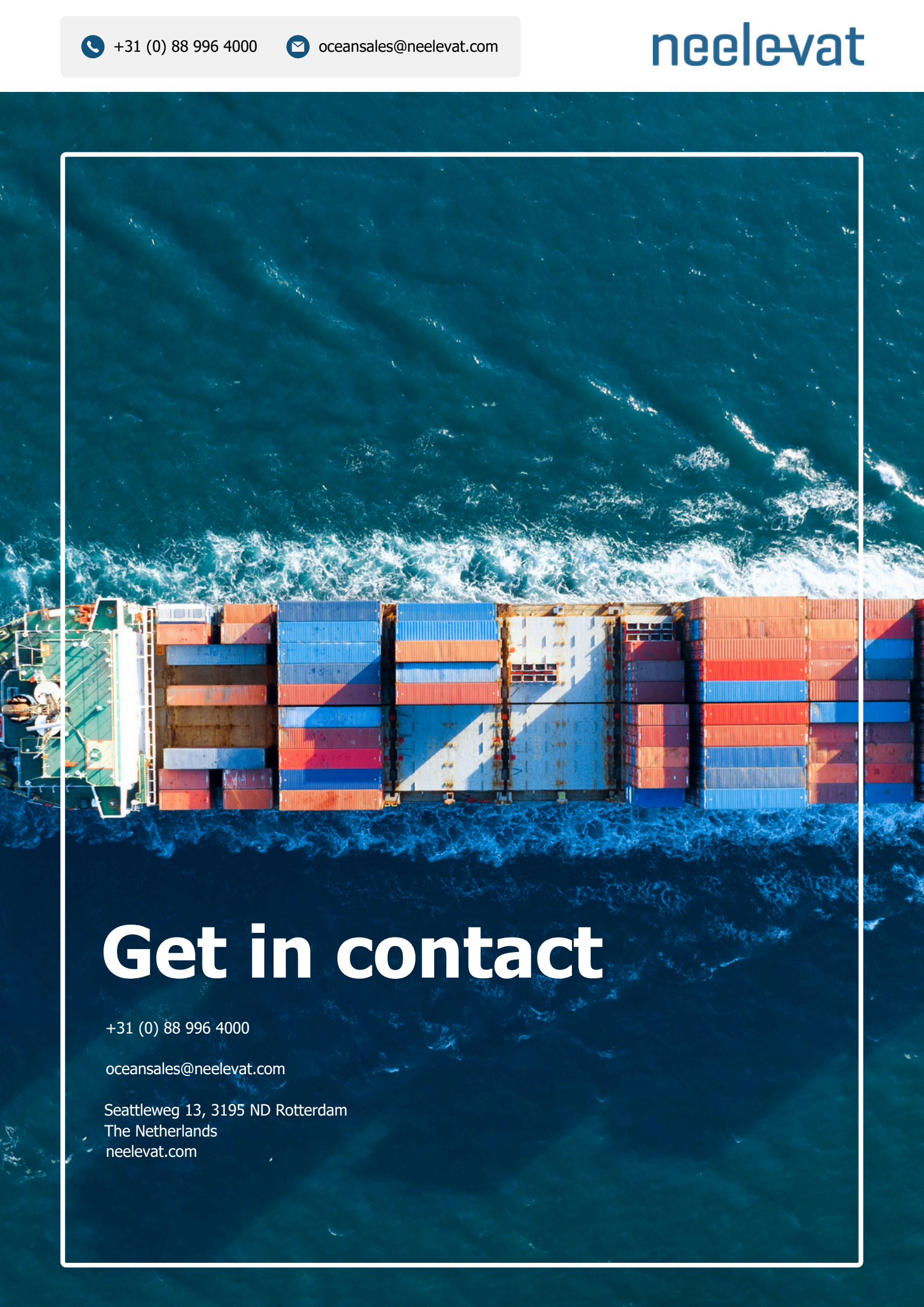


+31 (0) 88 996 4000



oceansales@neelevat.com

neelevat



Get in contact

+31 (0) 88 996 4000

oceansales@neelevat.com

Seattleweg 13, 3195 ND Rotterdam
The Netherlands
neelevat.com